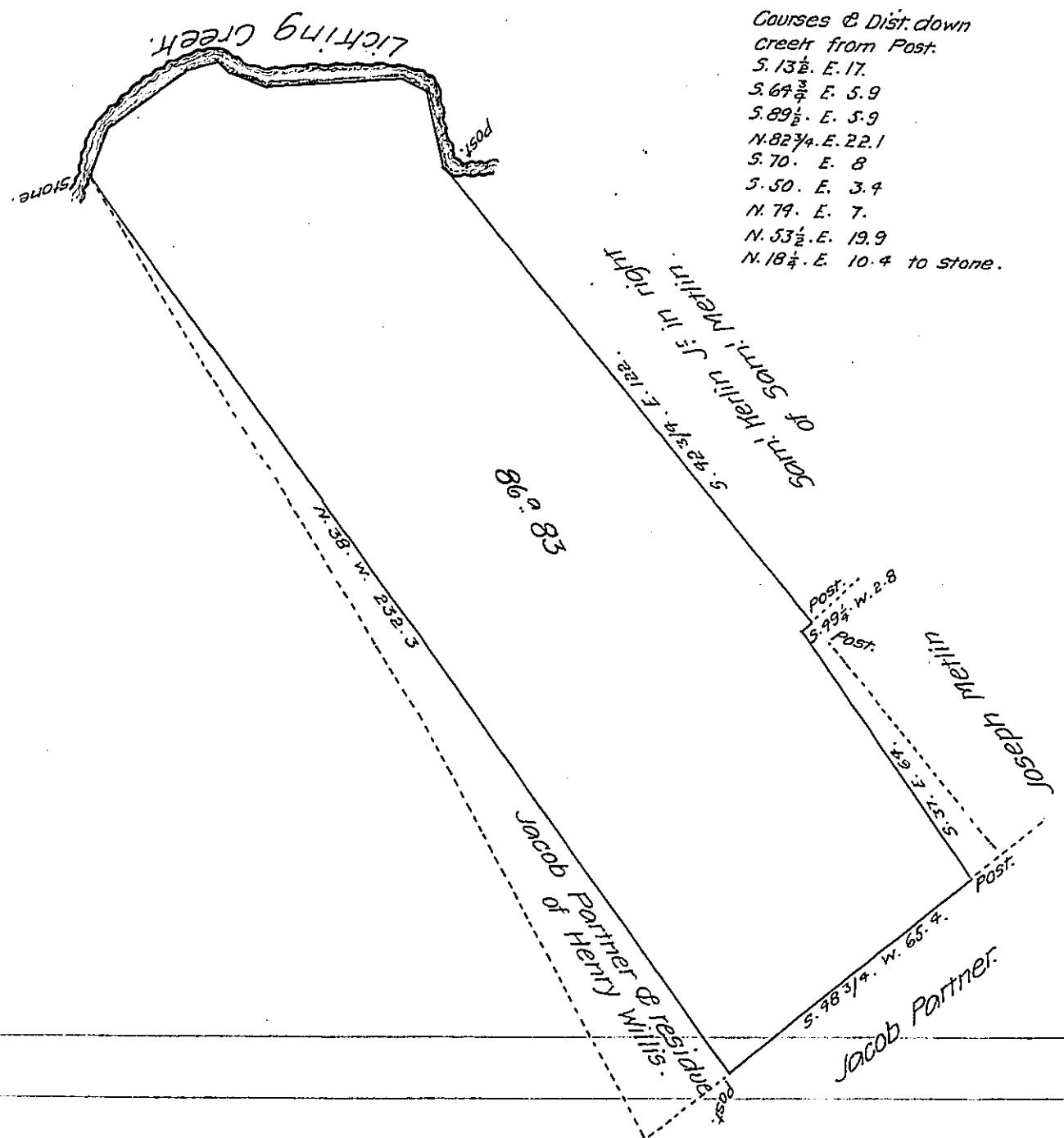


FORM NO. 1.



Eighty Six acres and 83 perches of Land with Six per cent Situate in Milford Township Juniata County being part of a tract said to contain 101^a 98 perches Surveyed 3rd November 1814 in pursuance of a warrant to Henry Willis dated 2nd Jan^y 1773 &c resurveyed the above part 1st Nov^r 1841 at the request of Samuel Kerlin Jr.

Pf J. W. Allen D.S.

To Jacob Sallade Esq^r
Surveyor General Harrisburg Pa.

IN TESTIMONY that the above is a copy of the original remaining on file in the Department of Internal Affairs of Pennsylvania, made conformably to an Act of Assembly approved the 16th day of February 1833, I have hereunto set my hand and caused the Seal of said Department to be affixed at Harrisburg, this eleventh day of October 1907.

Henry Howard
 Secretary of Internal Affairs.